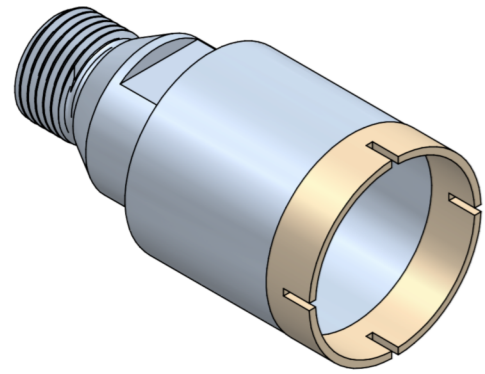


FORETTI DIAMANTATI

DIAMOND CORE DRILLS



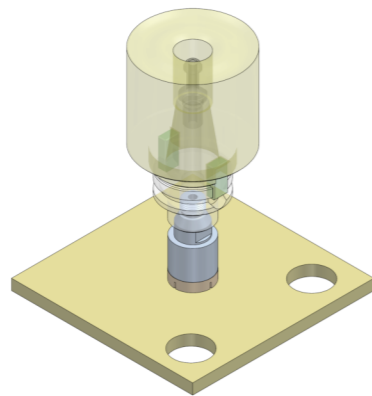
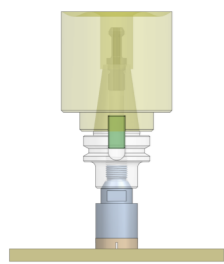
Utensili a fascia continua o con intagli, idonei alla foratura di tutti i materiali ceramici.

- **Diametro** 6÷200 mm.
- **Tipologia** per macchina CNC o manuali
- **Uso ad umido e secco**

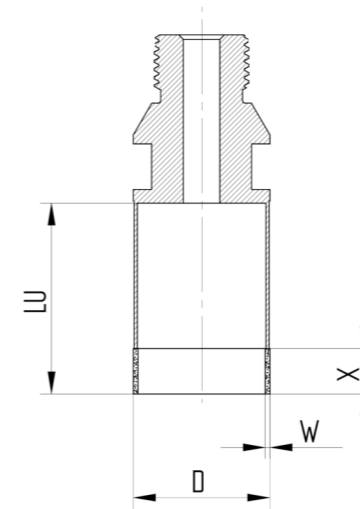
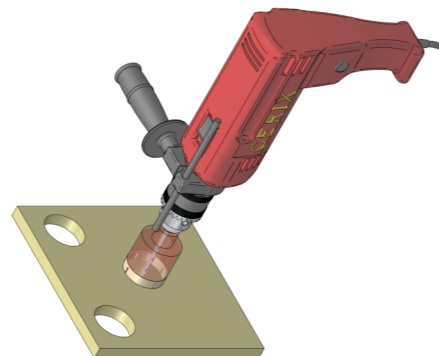
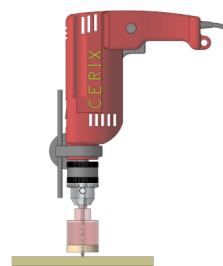
Continuous rim or with slots tools, suitable for the drilling of all ceramic materials.

- **Diameter** 6÷200 mm.
- **Types** for CNC or manual machines
- **Wet and dry use**

Per macchina CNC/for CNC machine



Per trapano/for drill



D = diametro/diameter
 X = altezza/height
 W = fascia/rim
 LU = lunghezza utile/useful length

MISURE STANDARD

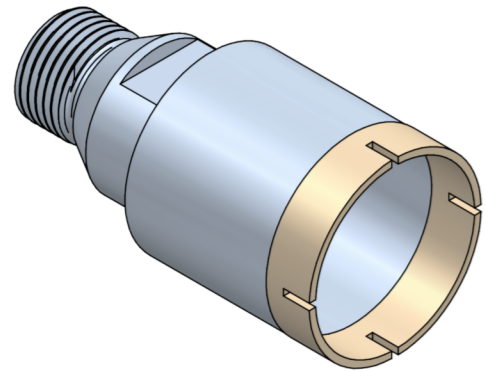
STANDARD SIZES

FORETTI/CORE DRILLS

Ø	W	attacco/fitting	LU	lungh. Totale/ total length
6	1,0	½ gas & cilindrico/cylindrical	30	75
8	1,0	½ gas & cilindrico/cylindrical	30	75
10	1,0	½ gas & cilindrico/cylindrical	30	75
12	1,0	½ gas & cilindrico/cylindrical	30	75
14	1,0	½ gas & cilindrico/cylindrical	30	75
15	1,0	½ gas & cilindrico/cylindrical	30	75
16	1,0	½ gas & cilindrico/cylindrical	30	75
18	1,0	½ gas & cilindrico/cylindrical	30	75
20	1,0	½ gas & cilindrico/cylindrical	30	75
22	1,0	½ gas & cilindrico/cylindrical	30	75
25	1,0	½ gas & cilindrico/cylindrical	30	75
30	1,0	½ gas & cilindrico/cylindrical	30	75
35	1,0	½ gas & cilindrico/cylindrical	30	75
40	1,0	½ gas & cilindrico/cylindrical	30	75
45	1,0	½ gas & cilindrico/cylindrical	30	75
50	1,0	½ gas & cilindrico/cylindrical	30	75
60	1,0	½ gas & cilindrico/cylindrical	30	75
70	1,0	½ gas & cilindrico/cylindrical	30	75
80	1,0	½ gas & cilindrico/cylindrical	30	75
100	1,0	½ gas & cilindrico/cylindrical	30	75

FORETTI DIAMANTATI

DIAMOND CORE DRILLS



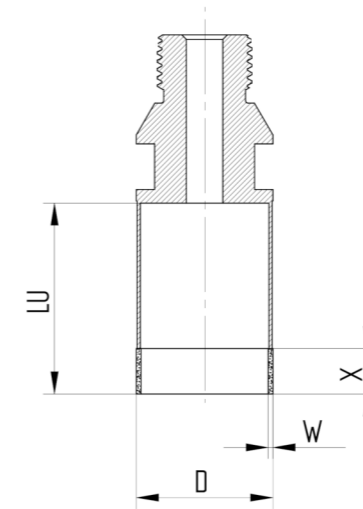
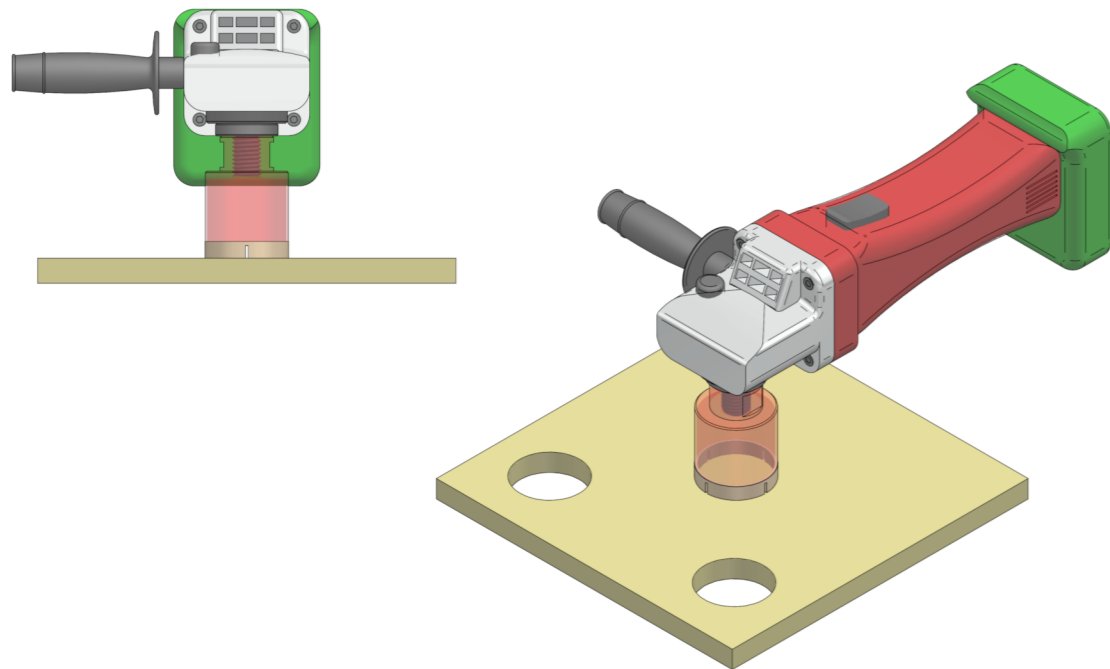
Utensili a fascia continua o con intagli, idonei alla foratura di tutti i materiali ceramici.

- **Diametro** 6÷60 mm.
- **Tipologia** per macchina manuale
- **Uso ad umido e secco**

Continuous rim or with slots tools, suitable for the drilling of all ceramic materials.

- **Diameter** 6÷60 mm.
- **Types** for manual machines
- **Wet and dry use**

Per smerigliatrice/for grinders



D = diametro/diameter
 X = altezza/height
 W = fascia/rim
 LU = lunghezza utile/useful length

MISURE STANDARD

STANDARD SIZES

FORETTI/CORE DRILLS

Ø	W	attacco/ fitting	LU	lungh. totale/ total length
6	1,0	M14	30	55
8	1,0	M14	30	55
10	1,0	M14	30	55
12	1,0	M14	30	55
14	1,0	M14	30	55
15	1,0	M14	30	55
16	1,0	M14	30	55
18	1,0	M14	30	55
20	1,0	M14	30	55
22	1,0	M14	30	55
25	1,0	M14	30	55
30	1,0	M14	30	55
35	1,0	M14	30	55
40	1,0	M14	30	55
45	1,0	M14	30	55
50	1,0	M14	30	55
60	1,0	M14	30	55